



# Dealer Documentation

# Example

Dear Dealer,

Please review these installation instructions thoroughly and completely with each new owner of a Bulldog ATV Carrier. Upon completion of this review, please document your review at the bottom of this sheet. Please keep the original of this document on file for future reference.

Thanks in advance,

Bulldog ATV Carriers

My Dealer Joe's ATV Shop of 125 South Main Street city of Anywhere state of Utah has completely reviewed the installation and use instructions for my Bulldog ATV Carrier with me John Doe of 345 South Aladdin Street city of Anywhere state of Utah. I feel comfortable with and have adequate understanding of the installation and use of my Bulldog ATV Carrier.

Joe Funimhavin 99/99/2099  
 Dealer Representative Date

John Doe 99/99/2099  
 Customer Date

**Dealer Must Fax this Document to Bulldog ATV 435-326-4443**



# Dealer Documentation

Dear Dealer,

Please review these installation instruction thoroughly and completely with each new owner of a Bulldog ATV Carrier. Upon completion of this review please document your review at the bottom of this sheet. Please keep the original of this document on file for future reference.

Thanks in advance,

Bulldog ATV Carriers

My Dealer \_\_\_\_\_ city of \_\_\_\_\_ state of \_\_\_\_\_ has completely reviewed the installation and use instructions for my Bulldog ATV Carrier with me \_\_\_\_\_ city of \_\_\_\_\_ state of \_\_\_\_\_. I feel comfortable with and have adequate understanding of the installation and use of my Bulldog ATV Carrier.

Dealer Representative \_\_\_\_\_ Date \_\_\_\_\_

Customer \_\_\_\_\_ Date \_\_\_\_\_



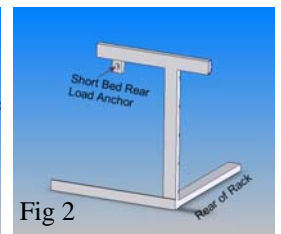
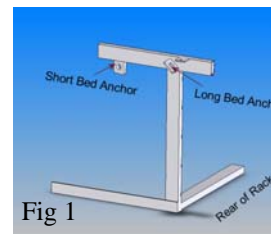
# Installation & Use Instructions

## Installation:

### Warning:

**Bulldog ATV Carriers are to be used on 3/4 ton and 1 ton pickups. Bulldog Carriers are not intended for use on, 1/2 or 1/4 ton pickups, mini-pickups or convertible vehicles such as the Chevrolet Avalanche. Bulldog ATV Carriers are intended to be used with the tailgate in the up position, using a Bulldog Carrier in a vehicle with a box shorter than 74" is not recommended. Bulldog ATV Carriers are not to be used on vehicles with Lift Kits, Suspension Alterations, or Oversized Tires. Death or Serious Injury May occur if used inappropriately, or on vehicles other than those recommended.**

1. Remove ramps from ATV Carrier and place in a safe location.
2. Place Carrier in pickup, (utilize 1 person per corner). (Note, rear load racks should be placed all the way to the rear of the bed, and still allow for the tailgate to close)
3. You will notice that the deck overhangs the rear uprights, but is flush with the front uprights. Ensure that the overhang is to the rear of the vehicle. Installing the rack backwards will result in damage to the vehicle cab.
4. Ensure that the rack is sitting flush on the floor of the truck bed with nothing under the primary support rails.
5. Ensure that the carrier is centered between the wheel wells of the truck.
6. Secure each corner of the rack to a durable factory anchor point. Bulldog Anchor Straps have a large and a small hook, the large hook attaches to the anchor point on the rack. (Note: All four corners of the rack must be secured by a Bulldog Anchor strap or equivalent. Fig 3) (Working load on fastening device must be 2000 lbs or greater) (See Figure 1 for Side load Rear Anchors) (See Figure 2 for Rear Load Rear Anchors)
7. When using Bulldog Anchor straps do not pull all the slack out of the strap and then attempt to ratchet the strap tight. Leave approximately 8" of slack in the strap to allow for at least 3 wraps around the ratchet axle, this will keep the rack from working loose during use.
8. Ratchet all four corners of the rack down tight. Ensure that the rack remains centered while tightening.
9. Place Ramps back in storage bays and secure with hitch pin.
10. Straps should be checked for tightness in the first 10 miles of travel and every 100 miles thereafter.



**BULLDOG ATV RACKS  
WWW.BULLDOGATV.COM**

100 N. 300 W.  
Marysvale, UT 84750

Phone: 435-326-4255  
Fax: 435-417-8888

Email: bulldogwebmaster@bulldogatv.com

# Use Instructions

## Use:

### Warning:

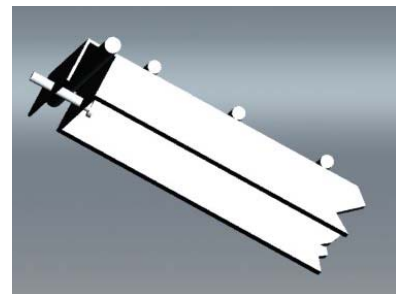
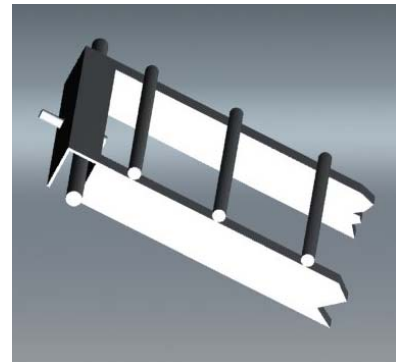
Bulldog ATV Carriers are not designed for use with 3 Wheelers, Motorcycles, Snowmobiles, or off-road vehicles with length longer than 75", or width wider than 47.5". Gross Weight of ATV, Gear, and Rider should not exceed 900 lbs. Death or serious injury may occur if instructions are not followed precisely. Ramps should not exceed a 30 degrees angle, improper use of ramps May result in Death or Serious Injury. Ramp Angle should be minimized as much as possible.

### Caution:

Wear all personal protective equipment when loading and unloading ATV's.  
2 Wheel drive ATV's should be winched on and off from carrier.

## Loading:

1. Lower safety gate and remove stowage pins, remove ramps from ATV Carrier.
2. Place the channel end of the ramp on the ramp rod of the ATV carrier.
3. Place stowage pins through the channel under the ramp rod and insert s-clip retainer back in pin. (failure to insert stowage pin prior to use may result in ramps coming off from ramp rod, resulting in bodily injury and property damage).
4. On Side load racks, the front position should always be loaded first.
5. Keep Hands and Fingers clear of center hinge when un-folding ramps.
6. Do not attempt to use ramps in a location where the base of the ramps would be below the ground level of the vehicle. It is desirable to find a location where ramp bases would be 12"-16" higher than the vehicle ground level. Place ramps at the correct width for the ATV being loaded and ensure they are sitting level on the ramp rod and the ground.
7. Load ATV, Ensuring that the first ATV is tight against the outer rub rails, providing for adequate room for the second machine. (2 Wheel / 4 wheel selectable ATV's should always be in 4wd.) Approach ramps slowly and ensure proper alignment. (Caution: Approaching ramps with excessive speed may result in bodily injury or property damage)
8. Upon successful, loading of the first ATV, set the parking break, remove keys, and secure the ATV with anchor straps. Anchor the ATV inboard of the anchor points. (Anchoring straight up will result in ATV movement.) It is not necessary to anchor above suspension.
9. Move Ramps to second location, insert stowage pins under the ramp rod. Ensure the ramps are at the proper width for the ATV being loaded and they are sitting level on the ramp rod and the ground.
10. Repeat steps 6 and 7.
11. Fold Ramps and stow between ATV wheels, remembering to pin the ramps in place.



# Use Instructions

## Use:

### Warning:

Un-loading, poorly running or cold ATV's may result in injury or possibly death. Many ATV's are equipped with engine brakes that lock up upon engine shutdown, this may result in injury or accident. Machines which are running poorly or are not up to operating temperature should be winched on and off from the carrier. Death or serious injury may occur if ATV stalls or engine locks up during loading or unloading.

### Caution:

Wear all personal protective equipment when loading and unloading ATV's.  
2 Wheel drive ATV's should be winched on and off from carrier.

## Unloading:

1. Lower safety gate and remove stowage pins, remove ramps from ATV Carrier.
2. The angle iron end of the narrow ramp section sits on the ramp rod of the ATV carrier.
3. Place stowage pins through the angle iron under the ramp rod and insert s-clip retainer back in pin. (failure to insert stowage pin prior to use may result in ramps coming off from ramp rod, resulting in bodily injury).
4. On Side load racks, the rear position should always be unloaded first.
5. Grasp outer ramp by the sides and fully extend the ramp. (Keep Hands and Fingers clear of ramp rungs during telescoping or collapsing of ramps.) Do not attempt to use ramps in a location where the base of the ramps would be below the ground level of the vehicle. It is desirable to find a location where ramp bases would be 6-12" higher than the vehicle ground level. Place ramps at the correct width for the ATV being unloaded.
6. Unload ATV, maintaining a constant speed, (avoid locking up the front brakes if driving off forward) (avoid locking up the rear brakes if backing off from a rear load rack) (2 Wheel / 4 wheel selectable ATV's should always be in 4wd. )
7. Upon successful, unloading of the first ATV, set the parking break, and place in a secure location. Move Ramps to the second location, insert stowage pins under the ramp rod. Ensure the ramps are at the proper width for the ATV being unloaded.
8. Repeat steps 6 and 7.
9. Collapse Ramps and stow between ATV wheels, remembering to pin the ramps in place.

